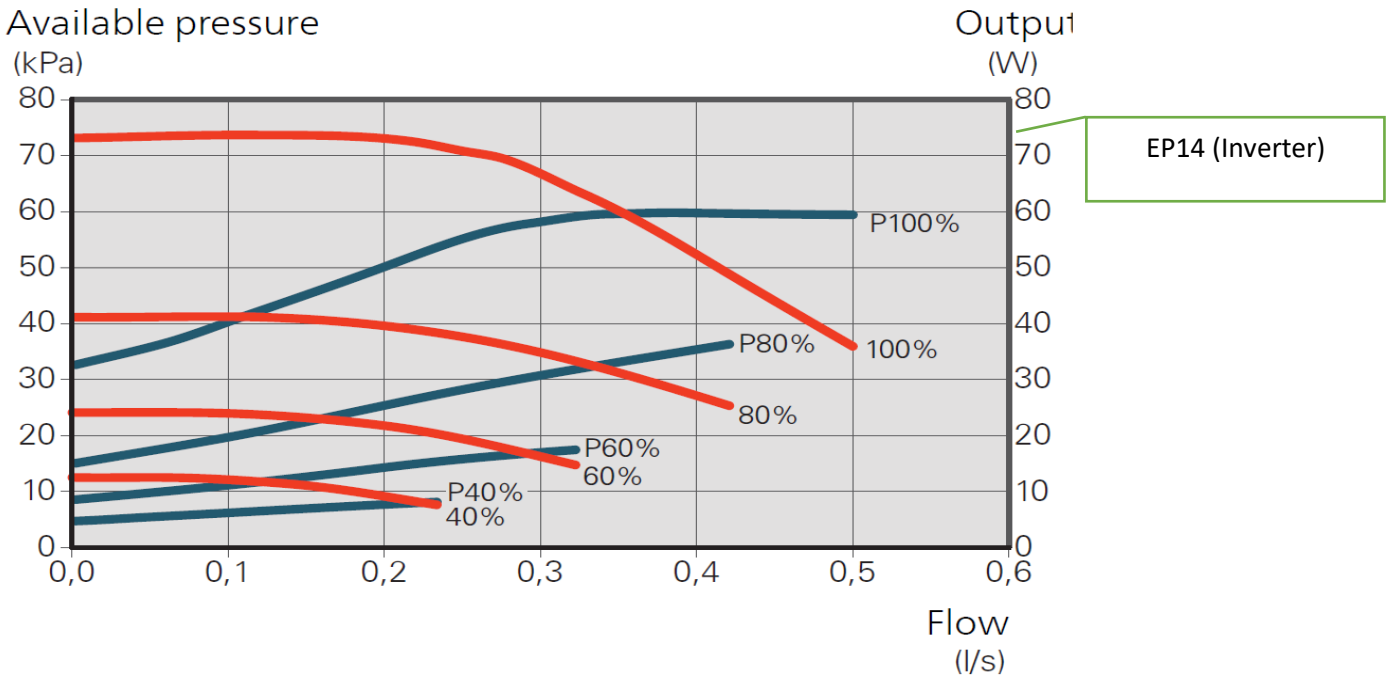
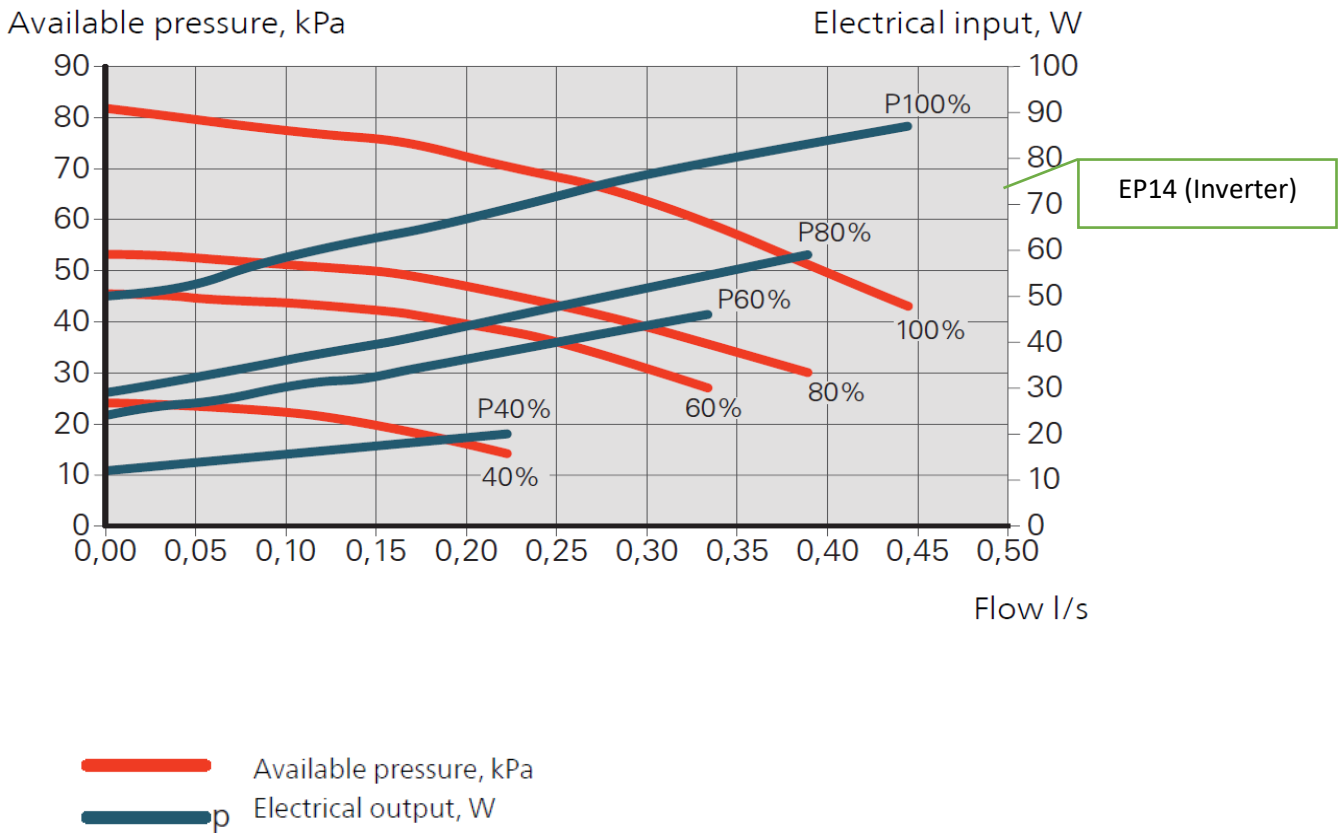


## Pump diagram Warm side, GreenMaster-HP all sizes.

### GreenMaster-HP-2-12:

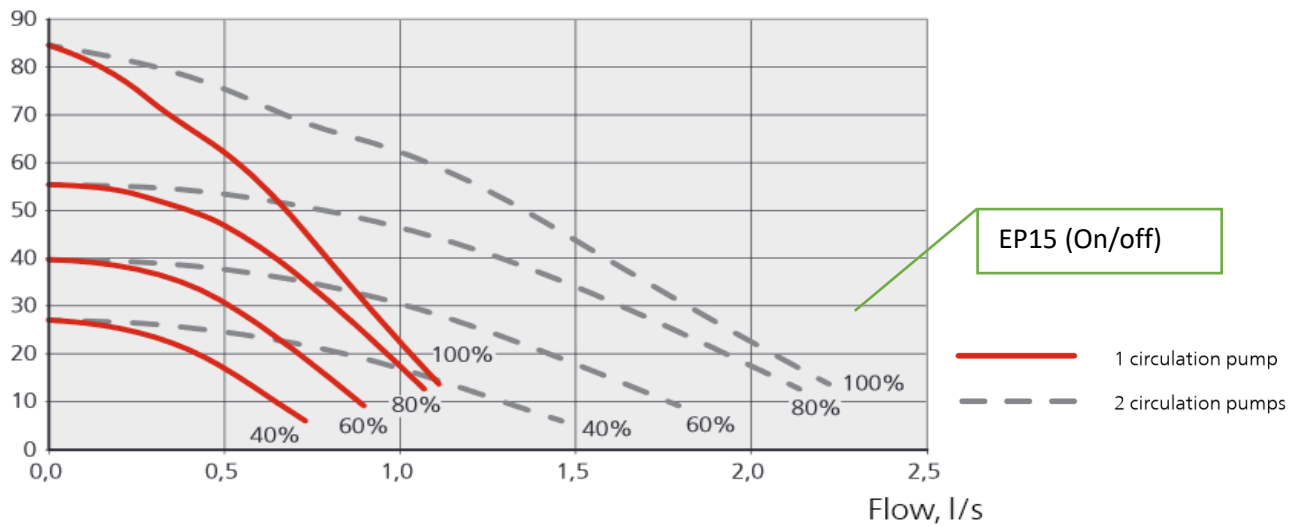


### GreenMaster-HP-2-16, GreenMaster-HP-3-16:

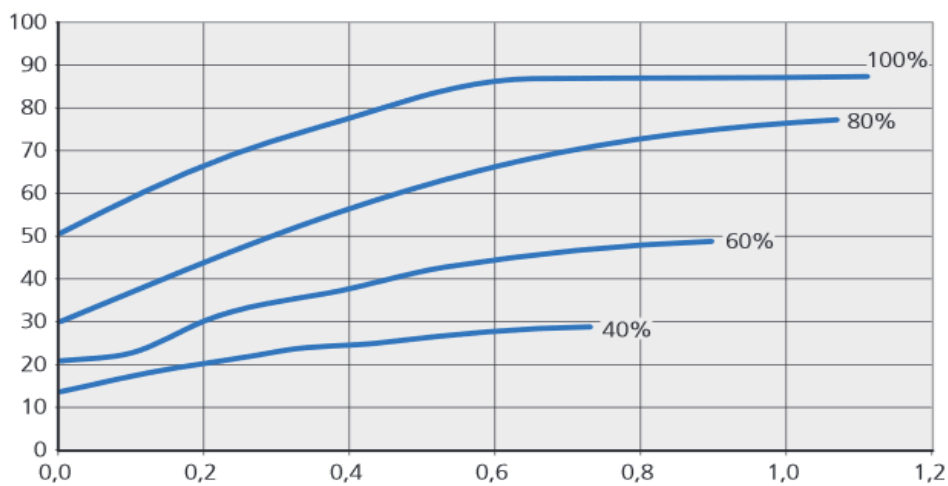


**GreenMaster-HP-3-12/12:**

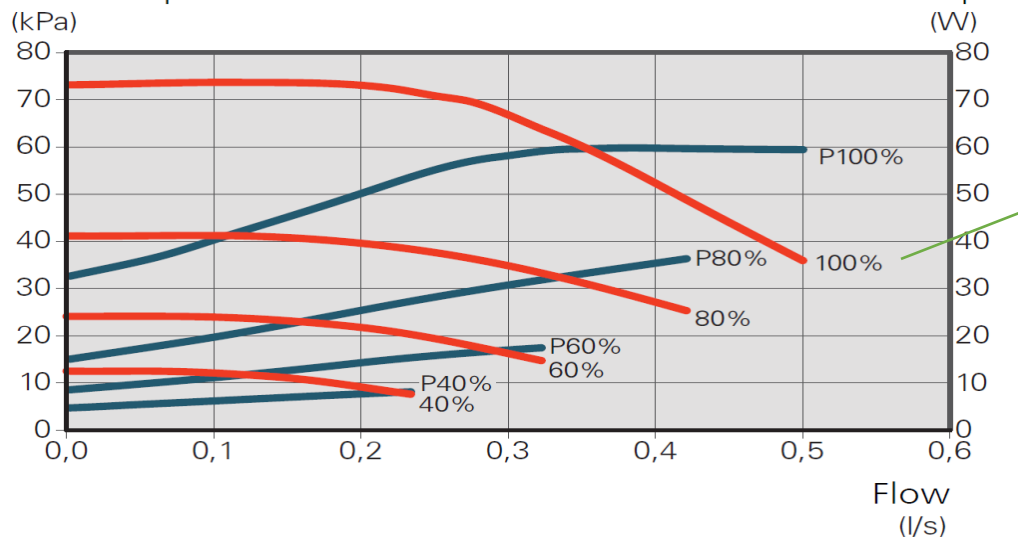
External available pressure, kPa



Electrical output per circulation pump, W



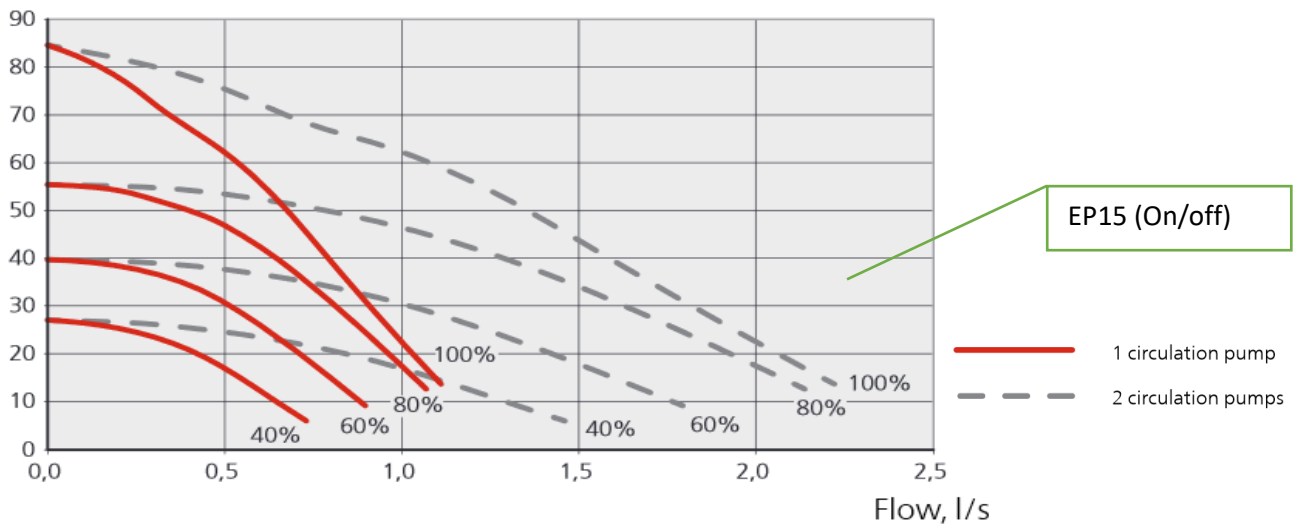
Available pressure



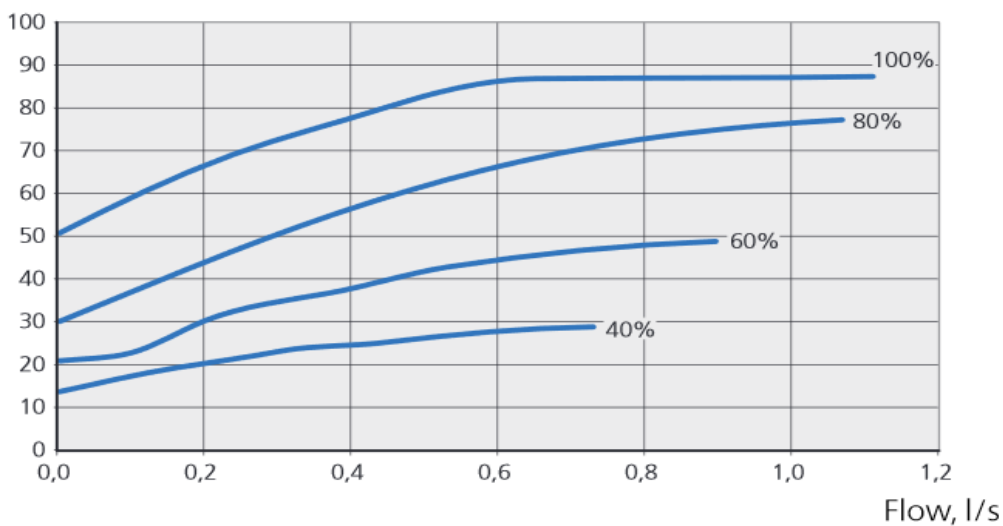
- Available pressure, kPa
- p Electrical output, W

**GreenMaster-HP-3-16/12, GreenMaster-HP-4-16/12**

External available pressure, kPa

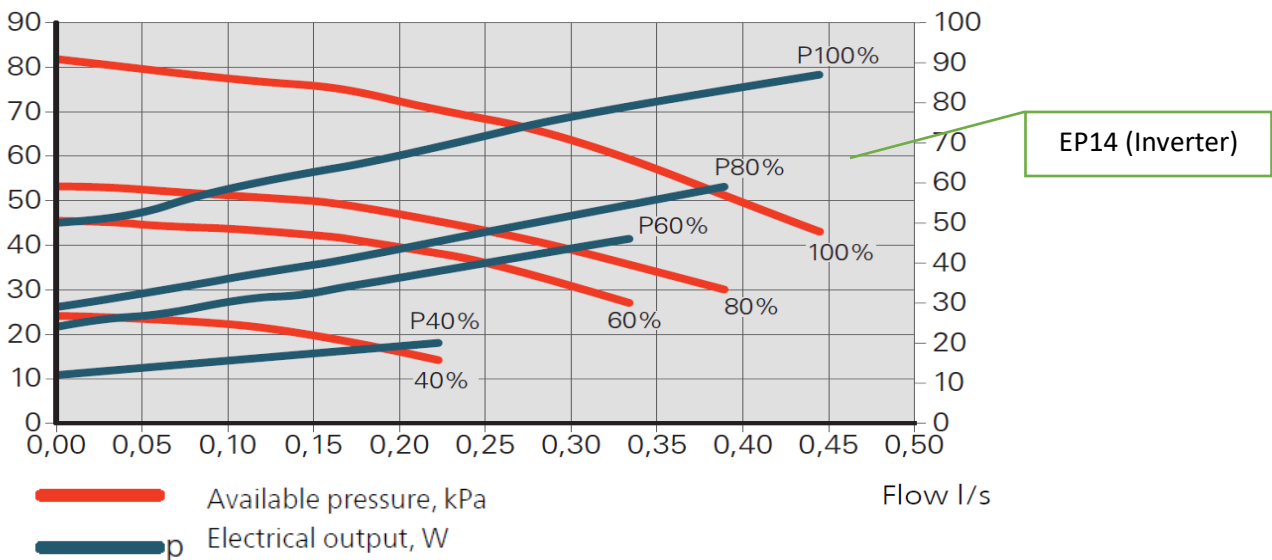


Electrical output per circulation pump, W



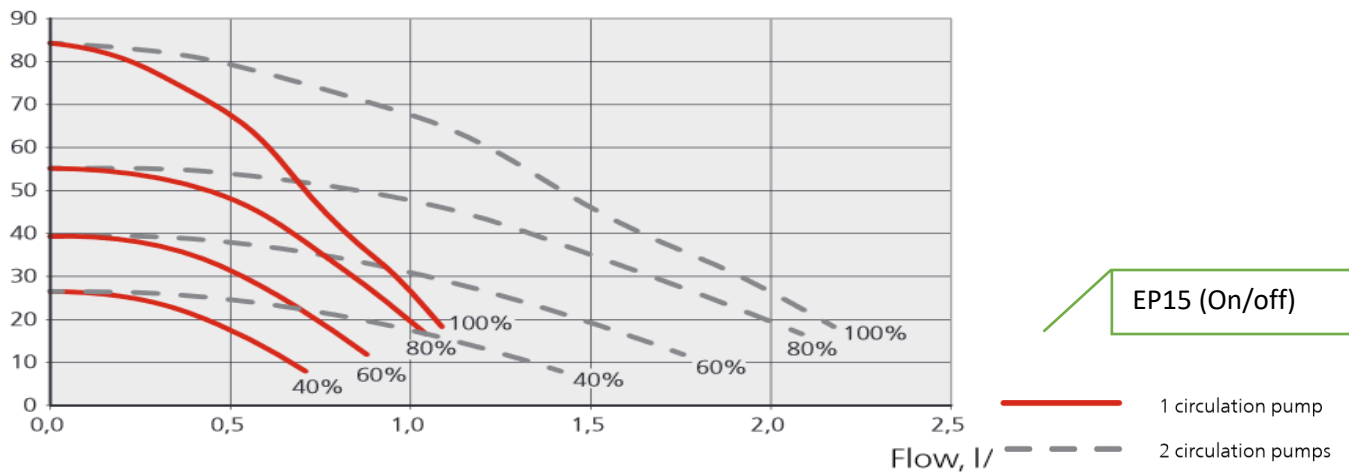
Available pressure, kPa

Electrical input, W

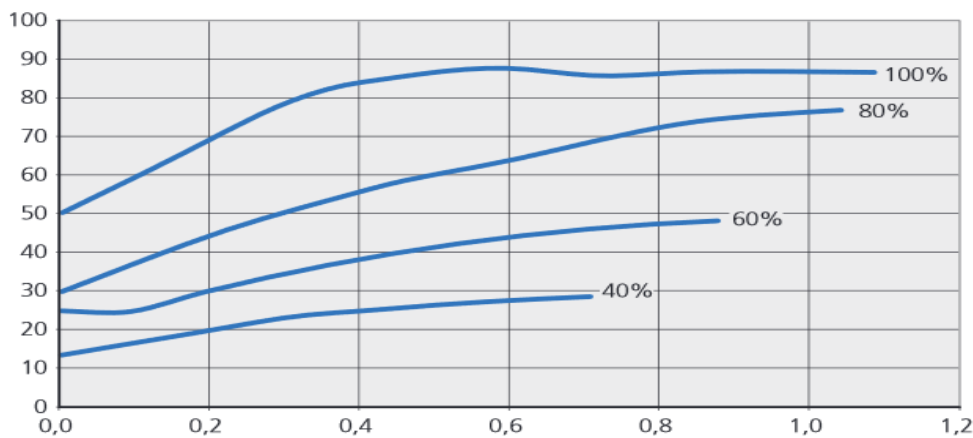


## GreenMaster-HP-3-16/15, GreenMaster-HP-4-16/15

External available pressure, kPa

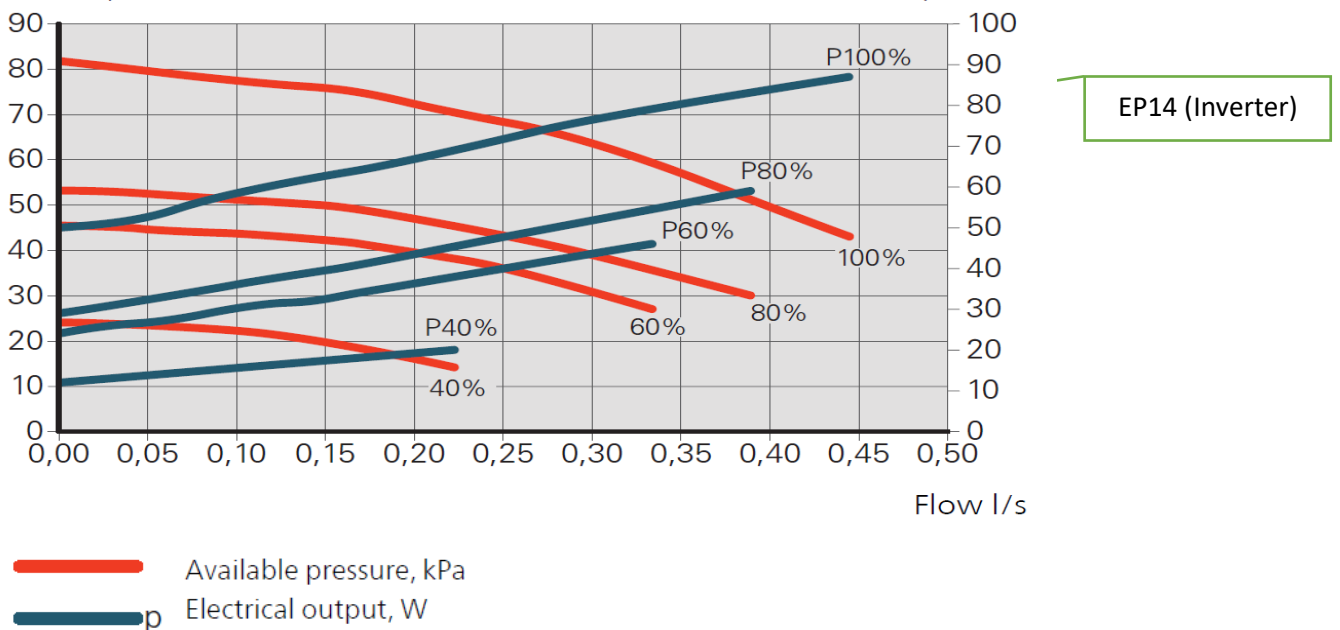


Electrical output per circulation pump, W



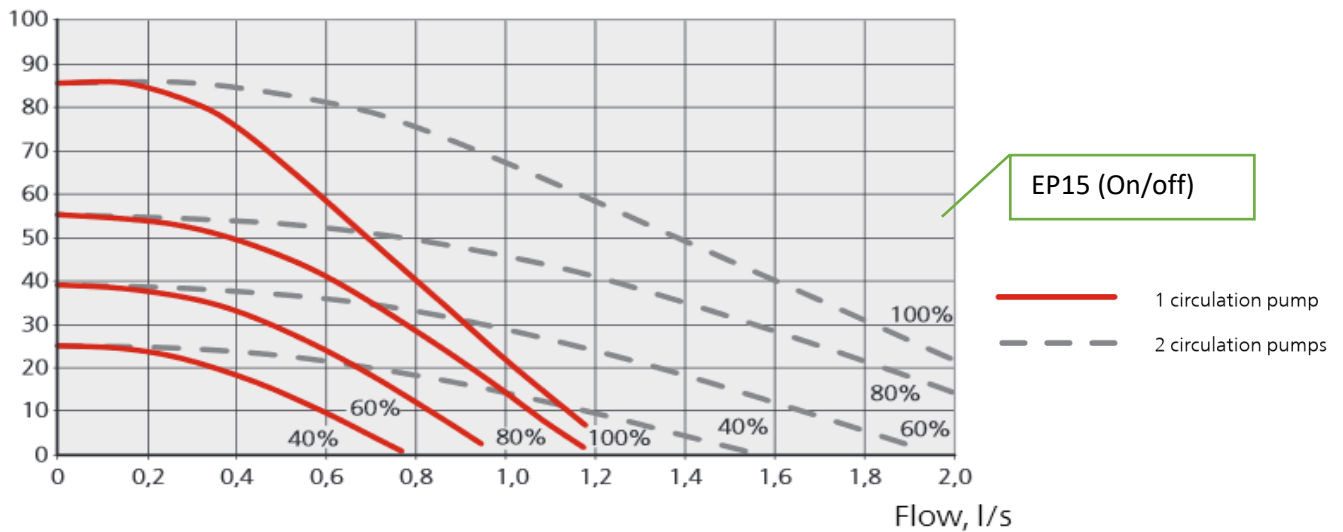
Available pressure, kPa

Electrical input, W

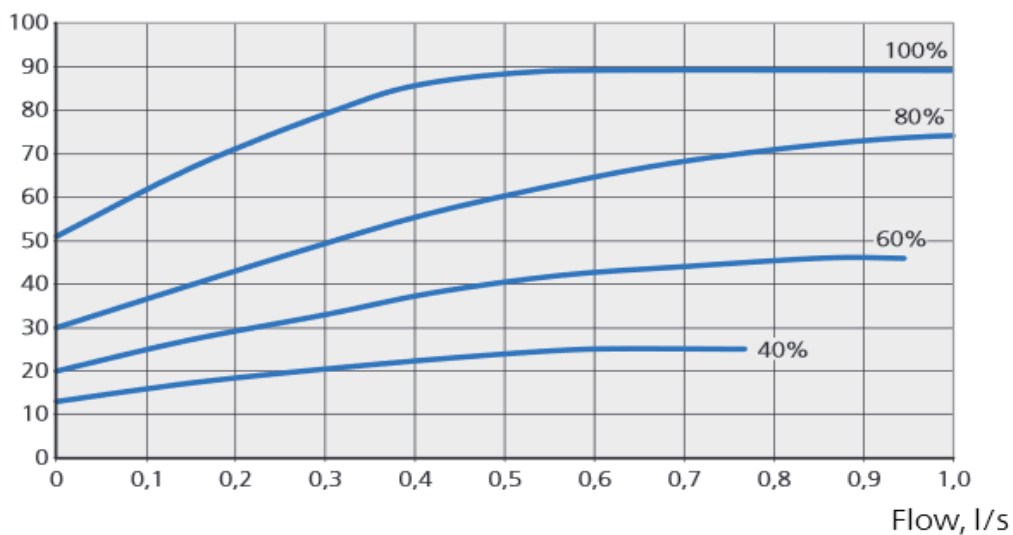


## GreenMaster-HP-4-16/20

External available pressure, kPa

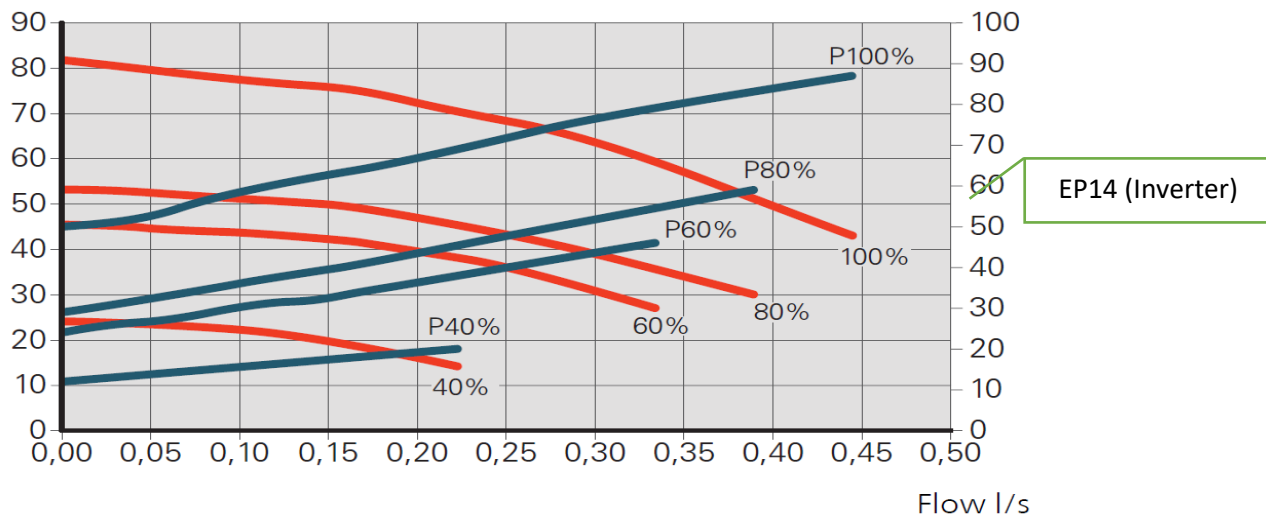


Electrical output per circulation pump, W



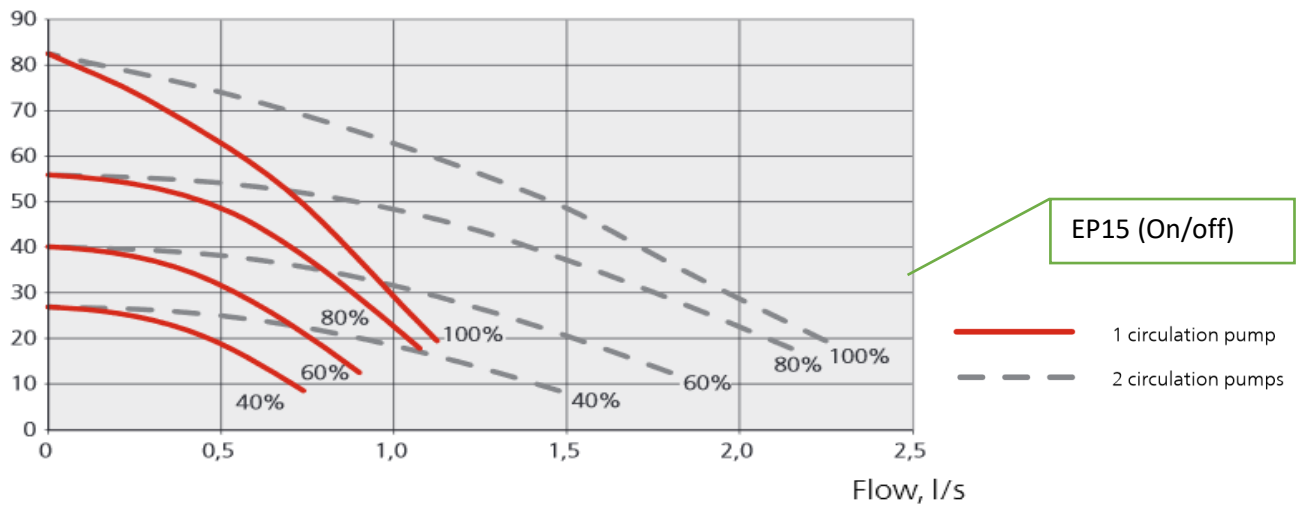
Available pressure, kPa

Electrical input, W

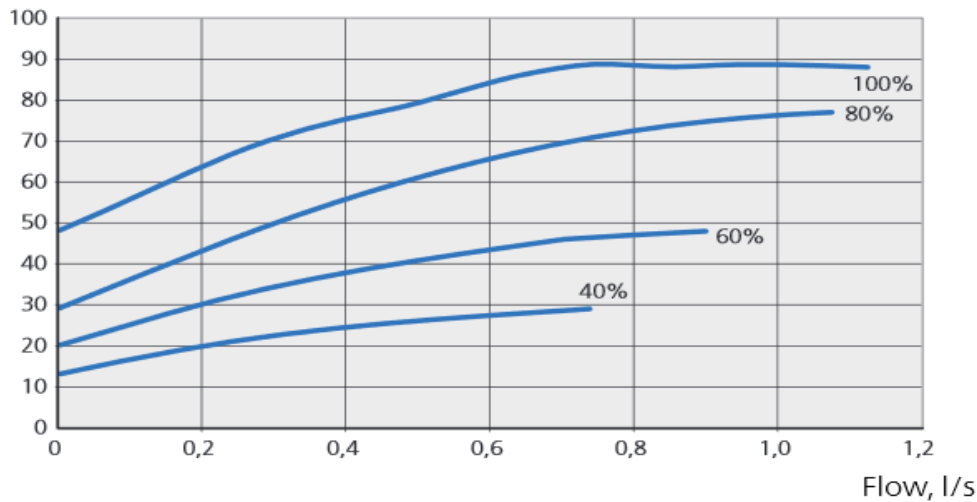


## GreenMaster-HP-4-16/30

External available pressure, kPa



Electrical output per circulation pump, W



Available pressure, kPa

Electrical input, W

